

Possible Gato Class American Submarine

Photo taken in in Soya / LaPerouse Strait at the last known location of the USS Wahoo (SS-238)

View from the top of the bow section

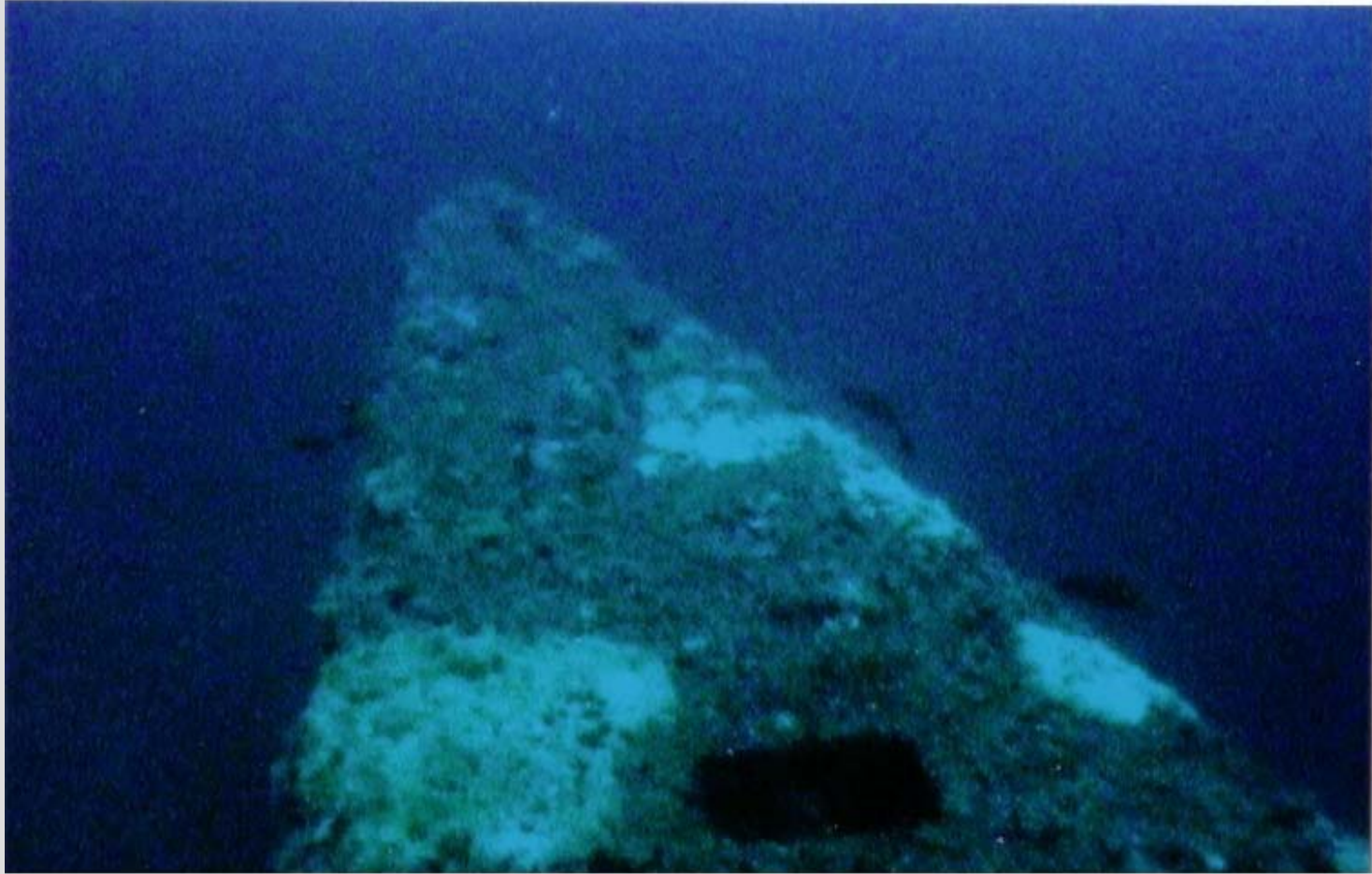


Photo courtesy of Vladimir Kartashev July 2006

Imaging and annotation by the *Wahoo Project Group* www.usswahoo.org

Contact: The USS Bowfin Museum and Park +1-808-423-1341 email: education@bowfin.org

Possible Gato Class American Submarine

Photo taken in in Soya / LaPerouse Strait at the last known location of the USS Wahoo (SS-238)

View aft of the forward deck gun



Photo courtesy of Vladimir Kartashev July 2006

Imaging and annotation by the *Wahoo Project Group* www.usswahoo.org

Contact: The USS Bowfin Museum and Park +1-808-423-1341 email: education@bowfin.org

Possible Gato Class American Submarine

Photo taken in in Soya / LaPerouse Strait at the last known location of the USS Wahoo (SS-238)

View forward of the forward deck gun



Photo courtesy of Vladimir Kartashev July 2006

Imaging and annotation by the *Wahoo Project Group* www.usswahoo.org

Contact: The USS Bowfin Museum and Park +1-808-423-1341 email: education@bowfin.org

Possible Gato Class American Submarine

Photo taken in in Soya / LaPerouse Strait at the last known location of the USS Wahoo (SS-238)

View aft of the starboard propeller

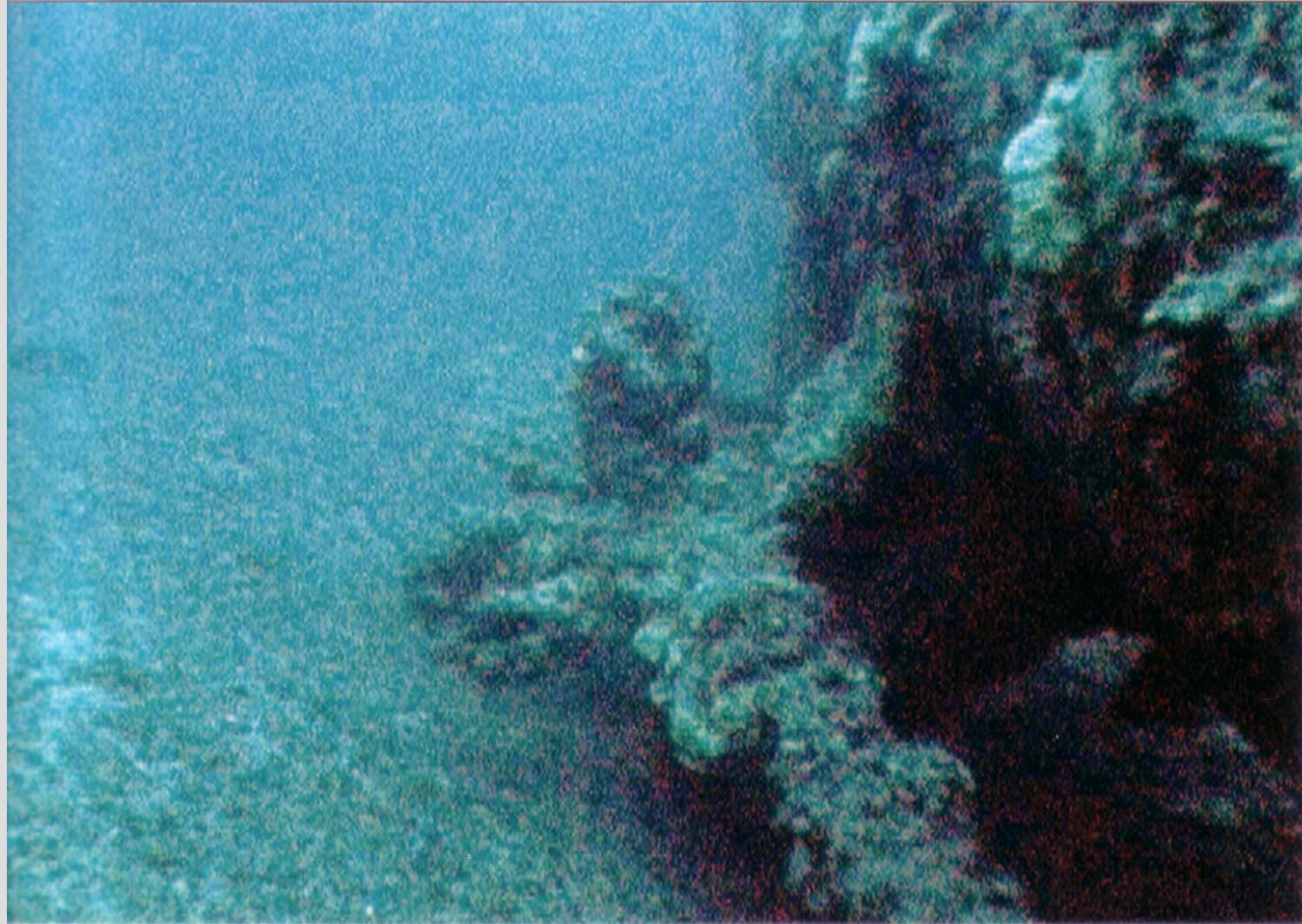


Photo courtesy of Vladimir Kartashev July 2006

Imaging and annotation by the *Wahoo Project Group* www.usswahoo.org

Contact: The USS Bowfin Museum and Park +1-808-423-1341 email: education@bowfin.org

Possible Gato Class American Submarine

Photo taken in in Soya / LaPerouse Strait at the last known location of the USS Wahoo (SS-238)

View of the stern diving planes, propellers, and rudder



Photo courtesy of Vladimir Kartashev July 2006

Imaging and annotation by the *Wahoo Project Group* www.usswahoo.org

Contact: The USS Bowfin Museum and Park +1-808-423-1341 email: education@bowfin.org

Possible Gato Class American Submarine

Photo taken in in Soya / LaPerouse Strait at the last known location of the USS Wahoo (SS-238)

View of a member of the dive team.



Photo courtesy of Vladimir Kartashev July 2006

Imaging and annotation by the *Wahoo Project Group* www.usswahoo.org

Contact: The USS Bowfin Museum and Park +1-808-423-1341 email: education@bowfin.org